



XMG3512

AC2050 VDSL2 Bonding/SFP Multi WAN Gateway

The XMG3512 is an all-in-one, AC2050, dual-band WiFi RG with built-in bonded VDSL2, gigabit Ethernet WAN, and SFP Interface for gigabit Active-fiber, GPON, or GFast access. The XMG3512 is ideal for premium residential or business deployments with symmetric broadband and premium triple-play services.

Benefits

Bonded VDSL2 with G.Vector

The Zyxel XMG3512 supports VDSL2 bonding with vectoring of up to profile 17a, single line up to 30a and 35b. The Vectoring support reduces crosstalk to increase performance and range for operators.

SFP for multiple WAN options

The built-in SFP cage for GPON, Active-fiber, or GFast module makes the XMG3512 the perfect solution for premium residential and business deployments with symmetric broadband access. The multi-WAN options of the XMG3512 is further enhanced with a fifth gigabit Ethernet port configured for WAN access, with GPON ONT deployments.

Carrier-class Wi-Fi for seamless mobility

The Zyxel XMG3512 offers dual-band Wi-Fi with performance-boosting features including Multi-User MIMO (MU-MIMO) and Beamforming for simultaneous, lag-free streaming, and gaming. Rated at AC2050, the new RGs deliver speeds of up to 1.7 Gbps* over 5 GHz and 300 Mbps* over 2.4 GHz. The high-power Wi-Fi on both 5 GHz and 2.4 GHz APs extends coverage to unleash the best wireless experience for homes with the growing number

Datasheet [XMG3512](#)



The Zyxel XMG3512 Dual-Band Wireless AC/N VDSL2 Bonding Gateway with USB provides high-speed Internet access over existing copper networks



The XMG3512 provides the ability to double the bandwidth for residential and business applications utilizing VDSL2 Bonding



The XMG3512 features a built-in 4x4 802.11ac WLAN that offers the best in class Wi-Fi solution for home networking and business office connectivity. Designed for higher wireless performance and extending the coverage



High power of 2.4 GHz/5 GHz Wi-Fi for extended coverage



TR-069 remote device management supporting the latest TR-181 Issue-2 data model



High USB 3.0 throughput for file sharing



Excellent routing and QoS capability to offer high-performance video, Internet access and BT services



Secure NAT, firewall with SPI and DoS to resist hacker attacks

of Wi-Fi devices. In addition, the ability to create multiple Wi-Fi networks with up to 4 SSIDs helps operators to easily create separate WLAN networks for video, data and guests.

Triple-Play powerhouse

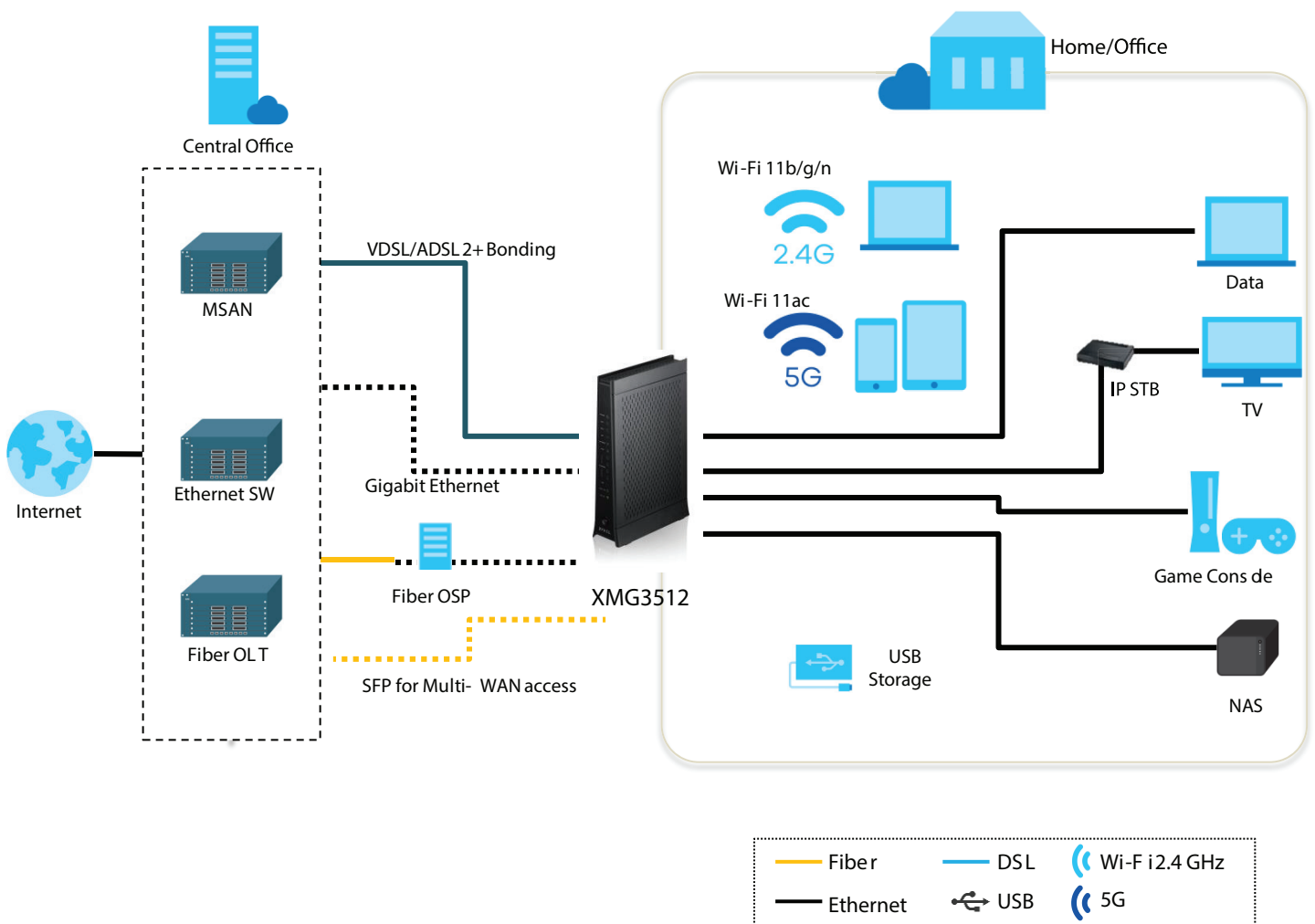
The Zyxel XMG3512 supports QoS, multicast traffic shaping for IPTV delivery and media streaming applications. The XMG3512 works with DHCP options for improved communications with Set Top Boxes. Utilizing IGMP v1/2/3 snooping and VLAN capabilities for premium video delivery services.

TR-069 remote management with TR-181 issue-2 support

The Zyxel XMG3512 supports TR-069 to simplify remote configuration, upgrade and management for reduced cost and improved customer satisfaction. The additional supports to the latest TR-181 issue-2 data model also enhance service providers' ability to oversee subscribers' LANs for improved customer support.

* The maximum simultaneous wireless data transfer rates of up to 300 Mbps for 2.4 GHz and 1733 Mbps for 5 GHz are derived from the IEEE Standard 802.11 specifications. The actual data transfer rates may vary in different network environment conditions including distance, network traffic, building site materials/construction, interference from other wireless devices and other adverse situations.

Application Diagram



Specifications

System Specifications

Wireless Standard

- 802.11 b/g/n 2.4 GHz
- 802.11 a/n/ac 5 GHz

VDSL and ADSL Compliance

- VDSL:
 - G.993.1 VDSL
 - G.993.2 VDSL2, band 997, 998, over POTS
 - Support VDSL profiles: 8a/b/c/d, 12a/b and 17a
 - G.998.2 (PTM Bonding)
 - G.993.5 (G.vector)
- ADSL:
 - G.992.1 (G.dmt)
 - G.992.2 (G.lite)
 - ANSI T1.413 compliant
 - G.992.3 (ADSL2)
 - G.992.5 (ADSL2+)
 - G.INP support

Router/Bridge Features

- IEEE 802.1D transparent bridge & basic spanning tree
- PPPoE (RFC 2516)
- PPPoA (RFC 2364)
- MAC encapsulation routing/IPoE
- Network Address Translation (NAT)
- NAT virtual server (port forwarding)
- DHCP client/server/relay with DHCP option 43/60/61/125
- DNS proxy/dynamic DNS
- Static/Policy route
- IGMP v1, v2, v3
- IPv4/IPv6

Wireless

- Wireless Protected Setup (WPS)
- WMM
- WEP data encryption 64/128 bit
- WPA2/WPA2-PSK with TKIP & AES security type
- Multi SSID: up to 4
- MU-MIMO support

VLAN/QoS

- 802.1Q VLAN tagging/un-tagging
- Support flexible traffic classification

Firewall & Security

- Generic packet filter
- DoS attack prevention
- Parental control

USB

- File Sharing

Management

- Web/HTTP: 3 level log-in
- Command Line Interpreter (CLI) via SSH or Telnet
- Firmware upgrade via Web/TFTP/FTP/TR-069 RPC method
- Text based configuration
- Configuration backup/update/restore default via Web
- Configurable access control for remote management (interface and/port number)
- DSL forum TR-069, TR-098, TR-111 and TR-181 i2
- SNMP v1, v2
- Rom-D support
- UPnP port forwarding rules on page

Hardware Specifications

- WAN: One 10/100/1000 Mbps Ethernet port RJ-45
- Wireless:
 - Two internal antennas (2.4 GHz)
 - Four internal antennas (5 GHz)
- DSL: One RJ-14 (6P4C)
- Ethernet: Four 10/100/1000 Mbps Ethernet ports RJ-45 (8P8C)
- USB: One USB 3.0 host
- Button:
 - One reset button
 - One WPS on/off push button
- Status LEDs indicators:
 - Power/System
 - DSL 1 - 2
 - SFP
 - LAN 1 - 4
 - WAN (ETH)
 - WLAN-2.4G/WPS
 - WLAN-5G/WPS
 - Internet
- Power consumption:
 - 12 V DC 3.5 A
 - Comply with FCC/UL

Physical Specifications

- Item dimensions (WxDxH): 38 - 66 x 190 x 293 mm (1.49" - 2.59" x 7.48" x 11.53")
- Item weight: 735 g (1.62 lb.)
- Packing dimensions (WxDxH): 218 x 378 x 130 mm (8.58" x 14.88" x 5.11")
- Packing weight: 1,417 g (3.13 lb.)

Environmental Specifications

Operating Environment

- Temperature: 0°C to 40°C (32°F to 104°F)
- Humidity: 10% to 90% RH (Non-condensing)

Storage Environment

- Temperature: -30°C to 70°C (-22°F to 158°F)
- Humidity: 10% to 95% RH (Non-condensing)

Certification

- FCC, IC, UL

Package Contents

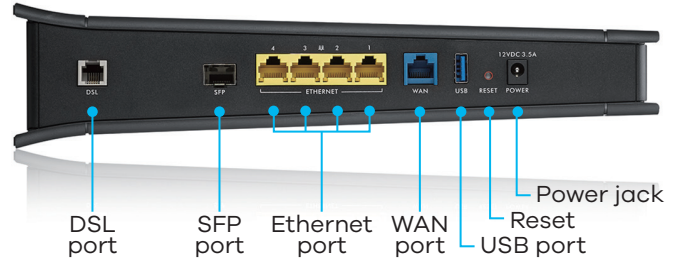
- Wireless router
- Power adapter
- Ethernet cable
- RJ-11 cable
- Quick start guide
- Warranty card

Front Panel



WPS button

Rear Panel



DSL port

SFP port

Ethernet port

WAN port

USB port

Power jack

Reset

Power

For more product information, visit us on the web at www.zyxel.com

Copyright © 2017 Zyxel Communications Corp. All rights reserved. Zyxel, Zyxel logo are registered trademarks of Zyxel Communications Corp. All other brands, product names, or trademarks mentioned are the property of their respective owners. All specifications are subject to change without notice.

Datasheet [XMG3512](#)



5-100-01316012 12/16